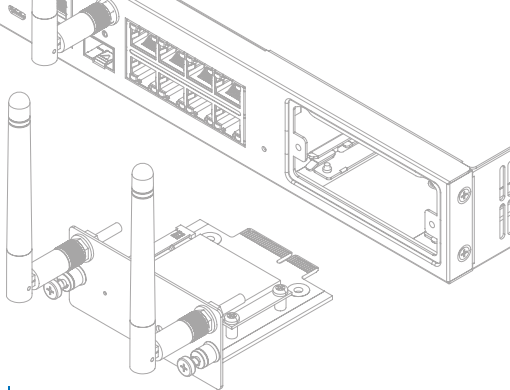


**SOPHOS**

Security made simple.

# 3G/4G Expansion Module Mounting Instructions

SG/XG 125(w)/135(w) Rev. 3



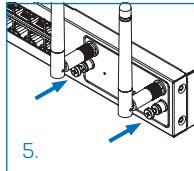
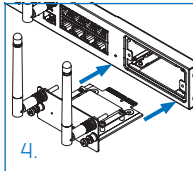
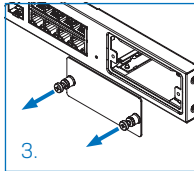
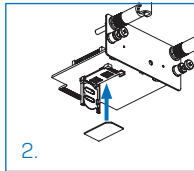
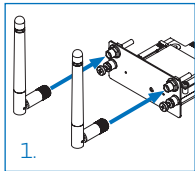
## 3G/4G Expansion Module Mounting Instructions

### Please note

- ▶ Before installing/removing the expansion module please make sure that the appliance is powered off and power cables are removed, and that no 3G/4G dongle is connected to any USB port.
- ▶ The 3G/4G Expansion module is only supported on the following models:
  - SG/XG 125/125w/135/135w rev.3
- ▶ Put the sticker that reads 'Contains FCC ID: N7NMC7455' at the bottom of the appliance enclosure

### Mounting the 3G/4G Expansion module

1. Attach the antennas shipped with the expansion module to the connectors at the back of the module
2. Insert your 3G/4G SIM card into the slot at the bottom of the expansion module
3. Unscrew and remove the metal plate from the expansion slot
4. Insert the 3G/4G Expansion module into the slot
5. Tighten the screws of the module



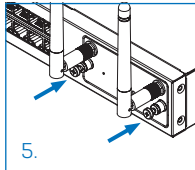
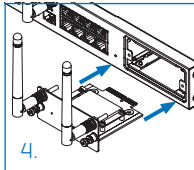
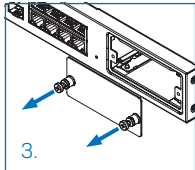
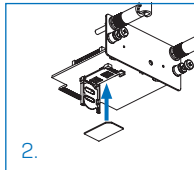
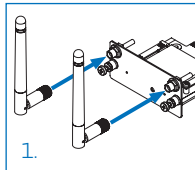
## 3G/4G Expansion-Modul Montageanleitung

### Bitte beachten

- ▶ Stellen Sie bitte sicher, dass kein 3G/4G-Dongle an einen USB-Port angeschlossen und dass die Appliance ausgeschaltet ist und sämtliche Stromkabel entfernt sind bevor Sie mit der Installation bzw. Entfernung des 3G/4G-Expansion-Moduls beginnen.
- ▶ Das 3G/4G Expansion-Modul wird nur von folgenden Modellen unterstützt:
  - SG/XG 125/125w/135/135w rev.3
- ▶ Kleben Sie den Sticker mit der Aufschrift "Contains FCC ID: N7NMC7455" auf den Gehäuseboden des Geräts

### Einbau des 3G/4G Expansion-Moduls

1. Befestigen Sie die mitgelieferten Antennen an der Rückseite des Expansion-Moduls
2. Führen Sie Ihre 3G/4G SIM-Karte in den Slot an der Unterseite des Expansion-Moduls ein
3. Lösen Sie die Schrauben von der Abdeckung des Einschubslots und entfernen Sie die Metallplatte
4. Schieben Sie das Expansion-Modul in die Öffnung
5. Ziehen Sie die Schrauben des Moduls fest



## 3G/4G Expansion Module Mounting Instructions

### Sales DACH

(Deutschland, Österreich, Schweiz)

Tel.: +49 (0) 611 585 8-0

Tel.: +49 (0) 721 255 16-0

E-Mail: sales@sophos.de

### Asia Sales

Tel: +65 62244168

Email: salesasia@sophos.com

### United Kingdom and Worldwide Sales

Tel: +44 (0)8447 671131

Email: sales@sophos.com

### North American Sales

Toll Free: 1-866-866-2802

Email: nasales@sophos.com

### Australia and New Zealand Sales

Tel: +61 2 9409 9100

Email: sales@sophos.com.au

© Copyright 2017-18. Sophos Ltd. All rights reserved.

Registered in England and Wales No. 2096520,

The Pentagon, Abingdon Science Park, Abingdon, OX14 3YP, UK

Sophos is the registered trademark of Sophos Ltd. All other product and company names mentioned are trademarks or registered trademarks of their respective owners.

18-03-06 (DD-2965)

The logo for Sophos, consisting of the word "SOPHOS" in a bold, blue, sans-serif font.